



# HP Latex 820 Printer

Increase production of outdoor/indoor applications



## Expand your outdoor/indoor application versatility

- Print on a wide media range—SAV, paper, wallpaper, PVC banner, film—direct to textiles for temporary indoor.<sup>1</sup>
- Outstanding image quality with 6 colors, a wide color gamut, 4-pt text, and up to 1200 dpi resolution.
- Outdoor prints achieve display permanence up to three years unlaminated and up to five years laminated.<sup>2</sup>
- Offer vehicle graphics backed by warranties from HP, Avery Graphics, and 3M, including 3M™ MCS™ Warranty.<sup>3</sup>

## See stunning image quality and high productivity

- See high-impact POP prints at up to 45 m<sup>2</sup>/hr. Prints come out completely dry, ready for lamination, finishing.
- Optional dual roll capability—print two 60-inch (1.52-m) rolls side-by-side at full production speed.<sup>4</sup>
- Produce double-sided<sup>5</sup> banners with minimal operator intervention. No need to rewind roll between sides.
- Reduce maintenance time—replace printheads without a service call, no daily manual cleaning needed.

For more information, please visit  
[hp.com/go/Latex820](http://hp.com/go/Latex820)

Find a comprehensive list of all latex compatible media along with finished color profiles and printer settings at  
[hp.com/go/mediasolutionslocator](http://hp.com/go/mediasolutionslocator)

## Differentiate, enable new business and new profit

- Help reduce waste disposal and equipment costs—no special ventilation equipment<sup>6</sup> or external dryer required.
- Attract new business with odorless prints<sup>7</sup> that are perfect for sensitive indoor display environments.
- Provide reassurance—HP Latex Inks are UL ECOLOGO Certified and GREENGUARD Children & Schools Certified<sup>SM, 8</sup>.
- Offer your customers added value with recyclable HP media and the HP Large Format Media take-back program.<sup>9</sup>

<sup>1</sup> For best results, print textile applications on fabric that does not stretch. Performance may vary depending on media. Please consult your media supplier for compatibility details.

<sup>2</sup> HP image permanence and scratch, smudge, and water resistance estimates by HP Image Permanence Lab. Outdoor display permanence tested according to SAE J2527 using HP Latex and low-solvent inks on a range of media, including HP media; in a vertical display orientation in simulated nominal outdoor display conditions for select high and low climates, including exposure to direct sunlight and water; performance may vary as environmental conditions change. Laminated display permanence using GBC clear gloss 1.7 mil hot laminate; for HP Air Release Adhesive Gloss Cast Vinyl using HP Clear Gloss Cast Overlaminate. Results may vary based on specific media performance and scratch testing methodology.

<sup>3</sup> The 3M™ MCS™ Warranty is available to certified Graphics Manufacturers. For more information on registration and qualification requirements, refer to [3Mgraphics.com](http://3Mgraphics.com), or contact your 3M representative.

<sup>4</sup> Not included, sold separately. Please check with HP to verify region availability of this accessory.

<sup>5</sup> For best results use blackout banner media intended for double-sided printing.

<sup>6</sup> Special ventilation is not required to meet U.S. OSHA requirements on occupational exposure to VOCs from HP Latex Inks. Special ventilation equipment installation is at the discretion of the customer—no specific HP recommendation is intended. Customers should consult state and local requirements and regulations.

<sup>7</sup> Some substrates may have inherent odor.

<sup>8</sup> UL ECOLOGO Certification to UL 2801 demonstrates that an ink meets a range of stringent criteria related to human health and environmental considerations (see [ul.com/EL](http://ul.com/EL)). HP Latex Inks are GREENGUARD Children and Schools Certified<sup>SM</sup> (see [greenguard.org](http://greenguard.org)).

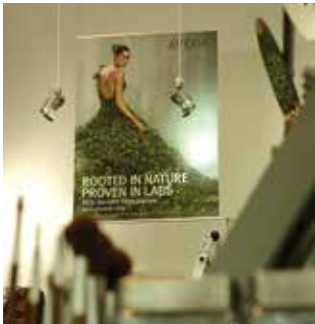
<sup>9</sup> HP Large Format Media take-back program availability varies. Some recyclable HP papers can be recycled through commonly available recycling programs. Recycling programs may not exist in your area. See [hp.com/recycle](http://hp.com/recycle) for details.



## HP Latex Printing Technologies

HP Latex Inks are water-based inks that combine the best characteristics of solvent inks and water-based inks. You can obtain the outdoor durability and versatility, across all common media types used in sign and display applications, together with high quality, odorless prints,<sup>10</sup> low maintenance, and the environmental advantages of water-based inks.

Prints made with HP Latex Inks are completely cured inside the printer to form a durable image that's ready for lamination, finishing, shipment, or display.



### Point of purchase posters

Reduce costs without compromising quality

- Great results on all types of paper, including low-cost uncoated papers and traditional offset papers



### Light boxes

Deliver high-value backlit applications

- Produce high-resolution prints up to 1200 dpi
- Vibrant, saturated colors
- Choose from a range of backlit printing materials: paper, film, polypropylene, and textiles<sup>11</sup>



### Outdoor and event banners

Produce images worthy of building the best brands

- Achieve high-quality results on self-adhesive vinyls and banners
- Offer outdoor display permanence up to three years unlaminated, five years laminated<sup>12</sup>



### Vehicle wraps and graphics

Achieve fast turnarounds, even on urgent jobs

- Laminate right after printing—no need to wait for prints to dry
- Flexible ink layer conforms to complex surfaces

<sup>10</sup> Some substrates may have inherent odor.

<sup>11</sup> Performance may vary depending on media—for more information, see [hp.com/go/mediasolutionslocator](http://hp.com/go/mediasolutionslocator) or consult your media supplier for compatibility details. For best results, use textiles that do not stretch. Performance varies by printer. For mid-volume HP Latex printers, the optional ink collector is required for porous textiles (included with the HP Latex 850 Printer). For low-volume HP Latex printers, print on media that does not let the ink trespass onto the printer.

<sup>12</sup> HP image permanence estimates by HP Image Permanence Lab. Outdoor display permanence tested according to SAE J2527 on a range of media, including HP media; in a vertical display orientation in simulated nominal outdoor display conditions for select high and low climates, including exposure to direct sunlight and water; performance may vary as environmental conditions change. Laminated display permanence using HP Clear Gloss Cast Overlaminate, GBC clear gloss 1.7 mil hot laminate, or Neschen Solvoprint Performance Clear 80 laminate. Results may vary based on specific media performance.



## HP Latex 820 Printer

### Vast improvement in double-sided printing

- The double-sided capability<sup>13</sup> allows you to print double-sided banners with minimal operator intervention; the HP Optical Media Advance Sensor (OMAS) controls registration automatically
- You can also save time—no need to rewind the roll between sides

### HP 126-in Dual Roll Kit - (Optional accessory CX062A)

- Dual-roll capability lets you print two 152-cm (60-in) rolls side-by-side and take advantage of the printer's full production speed
- The innovative differential system accommodates rolls of varying widths and lengths, by automatically adjusting the tension between the two media rolls
- A sturdy design enables unattended operation



### Wallcoverings and canvas

Discover a new market opportunity

- Odorless prints<sup>14</sup> are ideal for sensitive indoor environments
- Trial the easy-to-use HP WallArt solution, visit [hp.com/go/wallart](http://hp.com/go/wallart)<sup>15</sup>



### Temporary textiles<sup>16</sup>

Complement your business with new applications

- Print on a wide variety of textiles, including uncoated and natural textiles
- An easy-to-use solution compared to dye-sublimation techniques

## Eco Highlights

- Water-based HP Latex Inks—no special ventilation required, no hazard warning labels, no HAPs<sup>1</sup>
- HP Latex Inks—UL ECOLOGO, GREENGUARD Children & Schools Certified<sup>SM</sup>; produce odorless prints<sup>2</sup>
- Create wallcoverings that meet AgBB criteria; are rated A+ per Émissions dans l'air intérieur<sup>3</sup>
- Reduce your impact—print using a range of recyclable HP media, recycle printheads<sup>4</sup>



<sup>1</sup> Special ventilation is not required to meet U.S. OSHA requirements on occupational exposure to VOCs from HP Latex Inks. Special ventilation equipment installation is at the discretion of the customer—no specific HP recommendation is intended. Customers should consult state and local requirements and regulations. Contains no Hazardous Air Pollutants according to EPA Method 311.

<sup>2</sup> UL ECOLOGO Certification to UL 2801 demonstrates that an ink meets a range of stringent criteria related to human health and environmental considerations (see [ul.com/EL](http://ul.com/EL)). See [greenguard.org](http://greenguard.org). Some substrates may have inherent odor.

<sup>3</sup> HP PVC-free Wall Paper printed with HP Latex Inks meets AgBB criteria for health-related evaluation of VOC emissions of indoor building products (see [umweltbundesamt.de/produkte-e/bauprodukte/agbb.htm](http://umweltbundesamt.de/produkte-e/bauprodukte/agbb.htm)). Émissions dans l'air intérieur provides a statement on the level of emission of volatile substances in indoor air posing health risks if inhaled—on a scale from A+ (very low-emission) to C (high-emission).

<sup>4</sup> Visit [hp.com/recycle](http://hp.com/recycle) to see how to participate and for HP Planet Partners program features and availability; program may not be available in your area.

**Please recycle large-format printing hardware and printing supplies.**

**Find out how at our website**  
[hp.com/ecosolutions](http://hp.com/ecosolutions)

<sup>13</sup> For best results use blackout banner media intended for double-sided printing.

<sup>14</sup> Some substrates may have inherent odor.




<sup>15</sup> Requires an HP WallArt account, Internet connection, and connected Internet-capable device. One year free trial license. Cancel at any time. After the free trial, a full HP WallArt license may be purchased. For more information, see [hp.com/go/wallart](http://hp.com/go/wallart).

<sup>16</sup> Performance may vary depending on media—for more information, see [hp.com/go/mediasolutionslocator](http://hp.com/go/mediasolutionslocator) or consult your media supplier for compatibility details. For best results, use textiles that do not stretch. Performance varies by printer. For mid-volume HP Latex printers, the optional ink collector is required for porous textiles (included with the HP Latex 850 Printer). For low-volume HP Latex printers, print on media that does not let the ink trespass onto the printer.

## Technical specifications

|                               |  |  |
|-------------------------------|--|--|
| <b>Printing</b>               | Printing modes   | For highly-saturated fabrics and backlits (250% ink density): Production Plus (10-pass bidirectional) – 27 m <sup>2</sup> /hr (290 ft <sup>2</sup> /hr)  |
|                               |  | For fabrics and backlits (150% ink density): Production Plus (6-pass bidirectional) – 45 m <sup>2</sup> /hr (484 ft <sup>2</sup> /hr)  |
|                               |  | For outdoor billboards (70% ink density): Billboard (2-pass unidirectional) – 88 m <sup>2</sup> /hr (947 ft <sup>2</sup> /hr)  |
|                               |  | For drafts (50% ink density): Draft (1-pass unidirectional) – 177 m <sup>2</sup> /hr (1905 ft <sup>2</sup> /hr)  |
|                               | Print resolution   | Up to 1200 x 1200 dpi  |
|                               | Printheads   | 3 (cyan/black, yellow/magenta, light magenta/light cyan)   |
|                               | Nozzles  | 10,560 per printhead   |
| <b>Media</b>                  | Handling   | Roll-to-roll, guided double-sided process  |
|                               | Roll size  | Up to 3.2-m (126-in) wide  |
|                               | Roll weight  | Up to 130 kg (286 lb)  |
|                               | Roll diameter  | Up to 25-cm (9.84-in) outside diameter<br>7.62-cm (3-in) core<br>Thickness: up to 0.8 mm (31.5 mil)  |
| <b>Dimensions (w x d x h)</b> | Printer:   | 573 x 166 x 166 cm (226 x 65 x 65 in)  |
|                               | Shipping:  | 586 x 173 x 216 cm (231 x 68 x 85 in)  |
| <b>Weight</b>                 | Printer:   | 1053 kg (2321 kg). Shipping: 1770 kg (3902 lb)   |
| <b>What's in the box</b>      | HP Latex 820 Printer, HP LX610 printheads, 126-in spindles (x2), pneumatic gun, Original HP sample roll media, HP webcam with USB cable, HP network switch, HP Scitex LX Printer Cleaning Kit, HP LX600 Scitex Maintenance Kit, maintenance & troubleshooting guide, media edge holders (x2), documentation software, Ethernet cable, electrical configuration kit with fuses, Media Loading tool, Spindles supports (x2). |  |
| <b>Environmental ranges</b>   | Operating temperature:   | 15 to 30°C (59 to 86°F)  |
|                               | Operating humidity:  | 20 to 70% RH (non-condensing)  |
| <b>Acoustic</b>               | Sound pressure:  | 66 dB(A) (active); 44 dB(A) (standby)  |
|                               | Sound power:   | 8.5 B(A) (active); 6.6 B(A) (standby)  |
| <b>Power</b>                  | Printing:  | Three phase: 8 to 15 kW; single phase: 1 KW  |
|                               | Powersave:   | Three phase: 0 kW; single phase: 310 W   |
|                               | Off:   | 0.1 W  |
|                               | Requirements:  | Three phase (line-to-line voltage): 200 to 220 VAC (+/- 10%), 50 A max; 380 to 415 VAC (-10% +6%), 30 A max; 50/60 Hz; single phase: 115 to 127 VAC (+/- 10%); 200 to 240 VAC (-10% +6%) (Japan 200 V); 50/60 Hz, 10 A max |
| <b>Certification</b>          | Safety   | United States and Canada (CSA listed); EU (LVD and MD compliant, EN60950-1, 12100-1 and 60204-1); Russia (GOST)  |
|                               | Electromagnetic  | Compliant with Class A requirements, including USA (FCC rules), Canada (DoC), EU (EMC Directive), Australia (ACMA), New Zealand (MoC)  |
|                               | Environmental  | RoHS, WEEE, REACH  |
| <b>Warranty</b>               | One-year limited hardware warranty   |  |

## Ordering information

|  |  |  |  |
|--|--|--|--|
| <b>Product</b>   | CR773A   | HP Latex 820 Printer   |  |
| <b>Accessories</b>   | CK832A   | HP Scitex LX Printer Cleaning Kit  |  |
|  | CQ657A   | HP 126-in Spindle  |  |
|  | CX062A   | HP 126-in Dual Roll Kit  |  |
|  | CQ755B   | HP Scitex Caldera RIP Software   |  |
|  | D9Z41A   | HP Scitex Onyx Thrive 211 RIP Software   |  |
| <b>Original HP printheads</b>  | CN667A   | HP LX610 Yellow/Magenta Latex Printhead  |  |
|  | CN668A   | HP LX610 Cyan/Black Latex Printhead  |  |
|  | CN669A   | HP LX610 Light Magenta/Light Cyan Latex Printhead  |  |
| <b>Original HP ink cartridges and maintenance supplies</b>   | CN670A   | HP LX610 3-liter Cyan Latex Ink Cartridge  |  |
|  | CN671A   | HP LX610 3-liter Magenta Latex Ink Cartridge   |  |
|  | CN672A   | HP LX610 3-liter Yellow Latex Ink Cartridge  |  |
|  | CN673A   | HP LX610 3-liter Black Latex Ink Cartridge   |  |
|  | CN674A   | HP LX610 3-liter Light Cyan Latex Ink Cartridge  |  |
|  | CN675A   | HP LX610 3-liter Light Magenta Latex Ink Cartridge   |  |
|  | CC591A   | HP LX600 Scitex Maintenance Kit  |  |
|  | <b>Original HP large format printing materials</b> | HP printing materials are designed together with HP Latex Inks and HP Latex printers to provide optimal image quality, consistency, and reliability. |  |
|  |  | HP PVC-free Wall Paper (FSC® and GREENGUARD Children & Schools Certified <sup>SM</sup> ) <sup>17</sup>   |  |
|  |  | HP HDPE Reinforced Banner  <sup>18</sup>                          |  |
| HP Double-sided HDPE Reinforced Banner  <sup>18</sup>                   |  |  |  |
| HP Everyday Matte Polypropylene, 3-in Core  <sup>18</sup>               |  |  |  |
| For the entire HP Large Format Printing Materials portfolio, please see <a href="http://globalBMG.com/hp/signagemedia">globalBMG.com/hp/signagemedia</a> . |  |  |  |

<sup>17</sup> FSC® trademark license code FSC®-C017543, see [fsc.org](http://fsc.org). Not all FSC®-certified products are available in all regions. HP PVC-free Wall Paper printed with HP Latex Inks is GREENGUARD Children & Schools Certified<sup>SM</sup>. See [greenguard.org](http://greenguard.org).

<sup>18</sup> HP Large Format Media take-back program availability varies. Recycling programs may not exist in your area. See [hp.com/recycle](http://hp.com/recycle) for details.



HP Latex 820 Printer (formerly the HP Scitex LX820 Industrial Printer)

© Copyright 2012, 2013 Hewlett-Packard Development Company, L.P. The information contained herein is subject to change without notice. The only warranties for HP products and services are set forth in the express warranty statements accompanying such products and services. Nothing herein should be construed as constituting an additional warranty. HP shall not be liable for technical or editorial errors or omissions contained herein.

